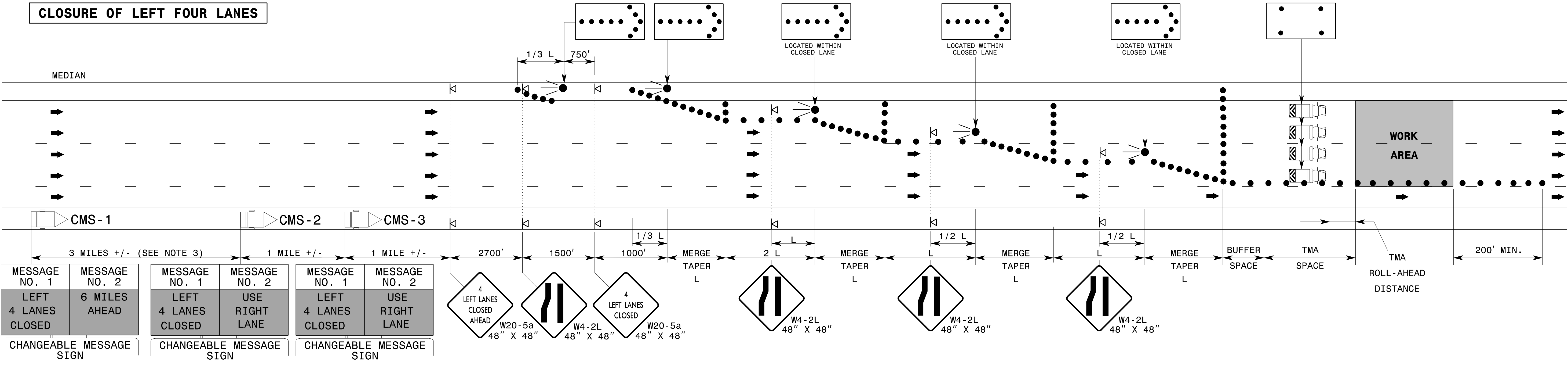
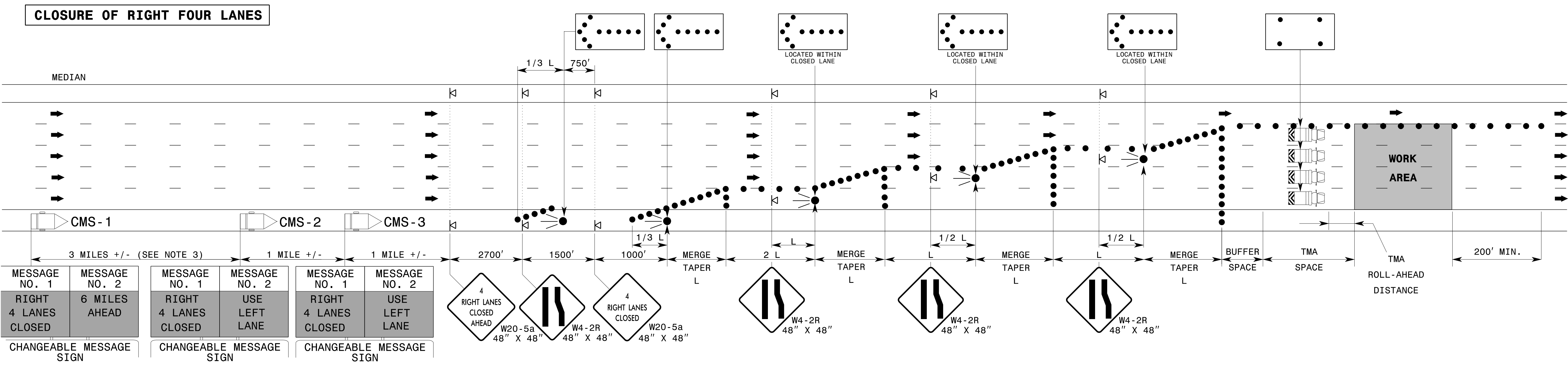


CLOSURE OF LEFT FOUR LANES



CLOSURE OF RIGHT FOUR LANES



GENERAL NOTES

- 1- REFER TO NOTES ON RSD. 1101.02, SHEET 3.
- 2- THE FIRST FLASHING ARROW BOARD IS NOT REQUIRED ON FACILITIES ≤ 55 MPH.
- 3- PLACE CHANGEABLE MESSAGE SIGN (CMS) ON THE OUTSIDE OF THE TRAVELWAY AS DIRECTED BY THE ENGINEER. PLACE CMS-1 5 MILES IN ADVANCE OF THE W20-5 SIGNS. IF TRAFFIC BACKS UP TO WHERE CMS-1 IS INITIALLY PLACED, RELOCATE CMS-1 1/2 MILE IN ADVANCE OF BACKUP. CONTINUE TO MONITOR TRAFFIC, MOVE CMS-1 APPROXIMATELY 1/2 MILE IN ADVANCE OF BACKUP. CMS-1 MAY BE OMITTED IF A DMS OPERATED BY THE DEPARTMENT IS LOCATED BETWEEN 5 AND 10 MILES FROM THE TAPER AND CAN BE USED TO DISPLAY MESSAGES. CMS-1 IS NOT REQUIRED ON FACILITIES ≤ 55 MPH.
- 4- THIS DETAIL IS APPLICABLE FOR OPERATIONS IN PLACE FOR 72 HOURS OR LESS. FOR LONGER DURATION OPERATIONS, SIGNING AND PAVEMENT MARKINGS MAY NEED TO BE ALTERED.

LEGEND

- FLASHING ARROW BOARD
- ◻ FLASHING ARROW BOARD (96"X48" MIN.), "CAUTION MODE"
- ▢ TRUCK MOUNTED ATTENUATOR (TMA)
- DRUM
- ◻ PORTABLE SIGN
- ◻ CHANGEABLE MESSAGE SIGN (CMS)
- ➔ DIRECTION OF TRAFFIC FLOW